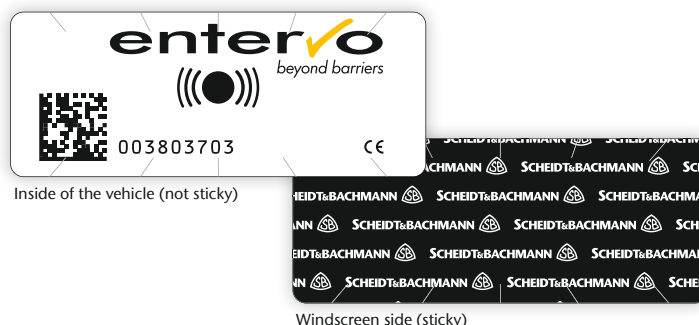


Affixing Instructions for RFID Tags

INTENDED USE

Radio-frequency identification (RFID) tags are non-contact identification media which can be read over large distances (several metres). RFID tags are very common in the field of season parker identification. The tags are attached to the inside of the windscreen and can be used for barrier control without opening the side window. This instruction describes the affixing of the RFID tag to the windscreen of a passenger car.

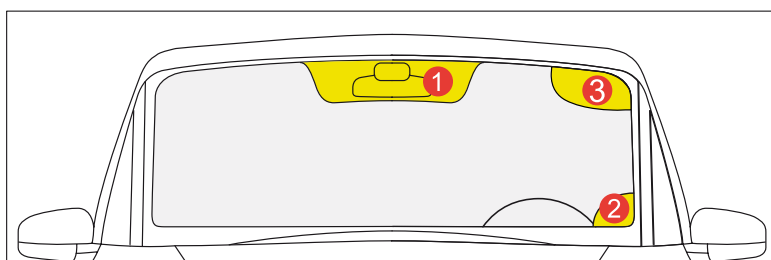


IMPORTANT INFORMATION



- The RFID tag must not obstruct the driver's vision!
- Removing the tag may result in damage to the tag.

MOUNTING



1) Determining the best place to attach the RFID tag

- The RFID tag is always attached onto the inside of the windscreen.
- To attach the RFID tag, select the designated area marked with (1).
- In case of a metalized windscreen (thermal insulation), please restrict yourself to the recessed area of the windscreen which is usually indicated by grey colour (1). In case of doubt, please contact the vehicle manufacturer or an authorised service centre in order to determine the best place for the RFID tag.
- If your car is equipped with a heated windscreen, attach the tag to place (2).
- Good results in case of vehicles without metalized/heated windscreens can also be achieved in area (3).

2) Attaching the RFID tag

- Assure windscreen is free of oils, wax and dust where the RFID tag is supposed to be attached.
- Keep a minimum distance of 2 cm to the windscreen frame.
- Remove the backing film from the RFID tag.
- Place the RFID tag to the intended place. Once in position, press firmly along tag line for optimum adhesion.

3) Testing the RFID tag

- Test the function.



Practical tip: If there is no information available, if your car is equipped with a metalized or heated windscreen, we recommend that you first check the tag at one of the above mentioned places. Please proceed as follows:

- Please do NOT remove the backing film from the tag and use an adhesive strip instead to attach it to one of the recommended places.
- Check the proper functionality.
- When working correctly, attach the tag as described above.
- If no function is provided, test the tag at another place.
- If you are certain that the place you have chosen is the best one, attach the tag.

File name: ENTRY-EXIT_DATA_RFID-Mount_8693400_b_0_en_GB.pdf / Illustrations and descriptions may also include special options.